



1307 L Street, Aurora, NE 68818 402-694-5535

ppri@hamilton.net www.prairieplains.org

Tom Sherman Land Acquisition

1. Scenic native prairie and Platte River ecosystem preservation:

- As a part of its Ribbons of Prairie initiative, Prairie Plains will acquire the Sherman property in an effort to preserve, restore and manage a large tract of prairie land along the Platte River in Nebraska's Hamilton County.
- The Sherman property is approximately 650 acres and includes one mile of Platte River frontage.
- The acquisition makes possible a larger continuous conservation tract including somewhere between 1,100 and 3,000 acres (with Prairie Plains-owned land and private lands under conservation easement) and associated river frontage.
- The ribbon of prairie and river frontage stretching from Bader Park east to the Sherman property already includes 120 acres of virgin wet Platte lowland prairie at Bader Park, 280 acres of one of the most diverse upland prairies in eastern Nebraska at Griffith Prairie, as well as 270 acres of high diversity prairie and wetland restoration on private land on Bush Island.
- This Platte River corridor area is within the designated Central Platte River Biologically Unique Landscape (BUL) of the Nebraska's Legacy Program (a multi-partner program to identify and prioritize Nebraska's native biodiversity resources).
- The Sherman property will be managed by Prairie Plains to increase native prairie and wetland plant diversity and wildlife habitat, and to maintain rangeland quality and productivity.

2. Enhancement of water quality in the Platte Corridor

- A keystone restoration component of the Ribbons of Prairie initiative is the re-establishment of ecosystem services provided by native prairie and wetland vegetation along rivers to hold the soil, slow down and filter surface water runoff, and enhance the process of water percolation into the ground.

3. Strategic development of the Prairie Plains prairie and wetland restoration program:

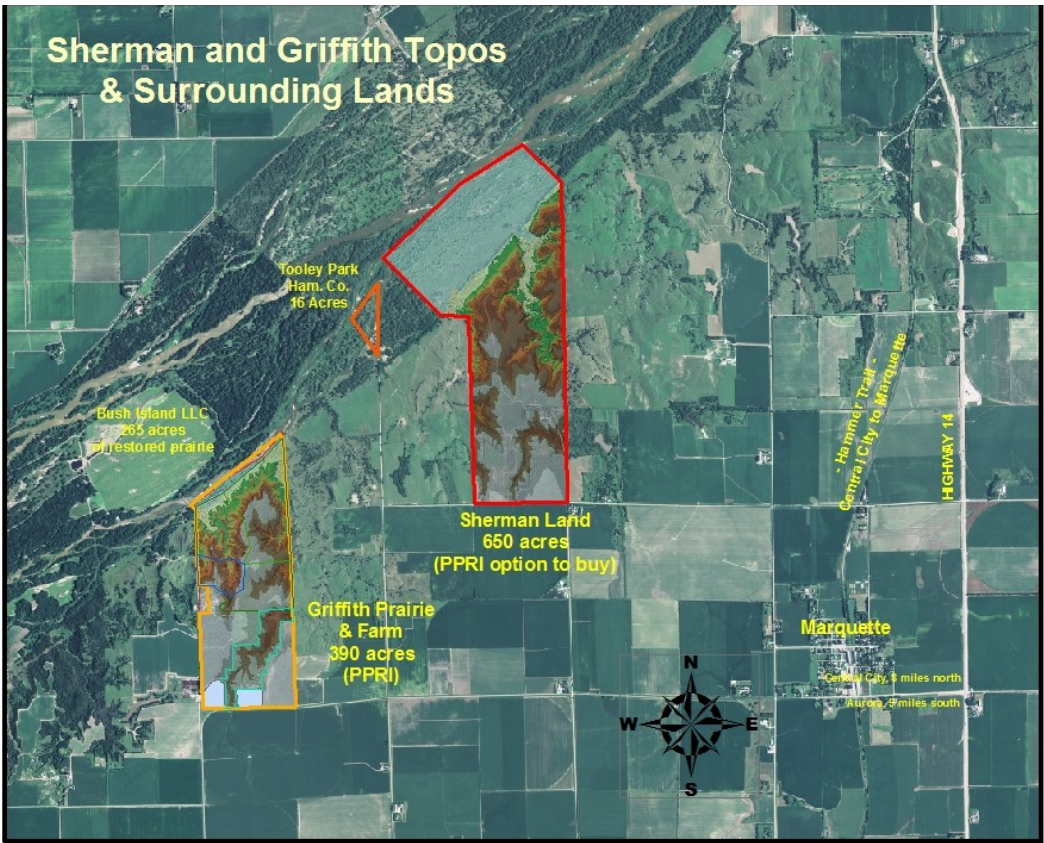
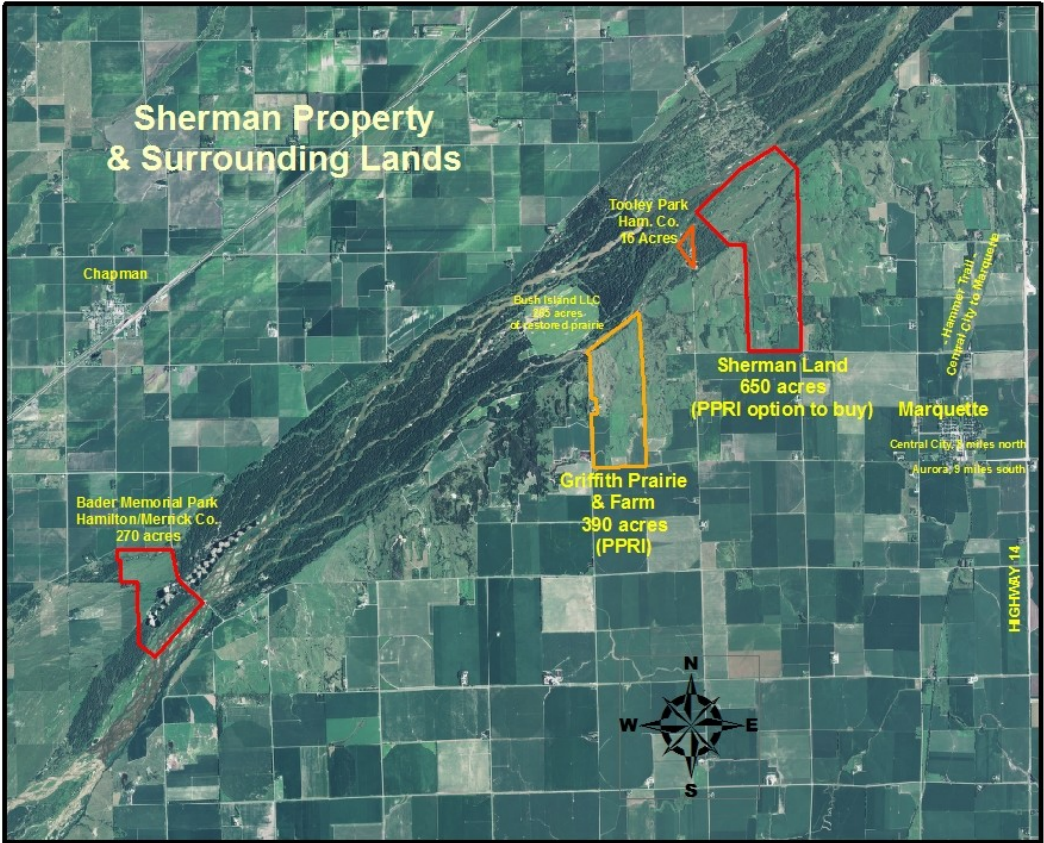
- Prairie Plains is a service provider to agency partners, earning program service income above \$200,000/yr through high diversity prairie and wetland planting services.
- The Sherman property will provide a large seed resource of many species, some with high volume potential, for the restoration program. As a primary provider of high diversity prairie restoration services in Nebraska, Prairie Plains anticipates significant demand for services in coming years. The acquisition of the Sherman property supports the growth and long-term sustainability of the restoration program.

4. Outdoor education and the Charles L. Whitney Education Center:

- The creation of a larger conservation tract expands the potential for Prairie Plains educational activities along the Platte Valley. It is unique as an educational resource and complements Griffith Prairie, Bader Park and Tooley Park for the SOAR Program, k-12 school field trips, summer enrichment and research programs, youth-to-adult and family programming.
- The diversity of the Sherman property and its proximity to Griffith Prairie creates the opportunity for a natural science field station for undergraduate/graduate level sciences, as well as the Prairie Plains intern program. A phenomenal array of sites within a 100-mile radius – including the Central and Lower Platte, Loup, Big and Little Blue and Republican River systems, prairies in the Sandhills and the Central Nebraska Loess Hills, Lancaster County's Salt Valley and the Rainwater Basin wetlands - creates a unique opportunity for the study of earth sciences, agriculture and natural resources, and biological sciences.

5. Increased public access to natural areas for outdoor recreation:

- The Sherman property will accommodate many forms of outdoor recreation which are compatible with conservation management and purposes.
- The corridor from Bader Park to the Sherman property creates an attractive venue for public participation. Prairie Plains will create working groups involving neighboring communities to weigh in on use and recreation opportunities.
- Use of the Sherman property can effectively be integrated with other parks, trails and attractions along the Platte River; public use will complement that of Bader and Tooley Parks and Griffith Prairie.
- Various levels of public use are anticipated, including planned events (e.g. trail rides), seasonal activities (e.g. hunting) and year-round use in designated areas with minimal planning or supervision (e.g. canoe landing and camp site, tent camping, hiking, photography and birding).



**Sherman Land
Hamilton County, NE**

Tooley Park
Ham. Co.
16 Acres

**Sherman Land
650 acres**

Farmstead & Cropland
approximately
90 acres total

Griffith Prairie

N Rd

O Rd

23 Rd

